

Gasketed Plate Heat Exchanger

NP PLATE TECHNOLOGY



DESIGN & FUNCTION

Increasing demand for cold supply in high-rise buildings and data centers as well as district cooling poses new challenges to gasketed plate heat exchangers in matter of pressure resistance and performance.

Our answer is the new NP series – developed with these applications in mind. The NP150X is the first plate of our new series. NP250L is an extension of our successful NP Series concerning the size diversity.

The adoption of a plate with narrower plate gap and a smaller pitch ensures highest heat transfer performance. It is the perfect fit for applications with extremely low temperature differences and high NTU values.

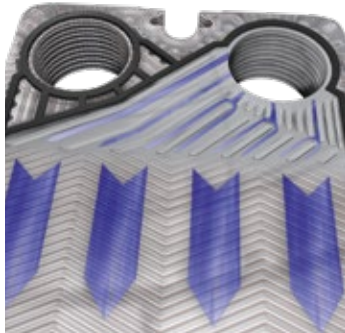
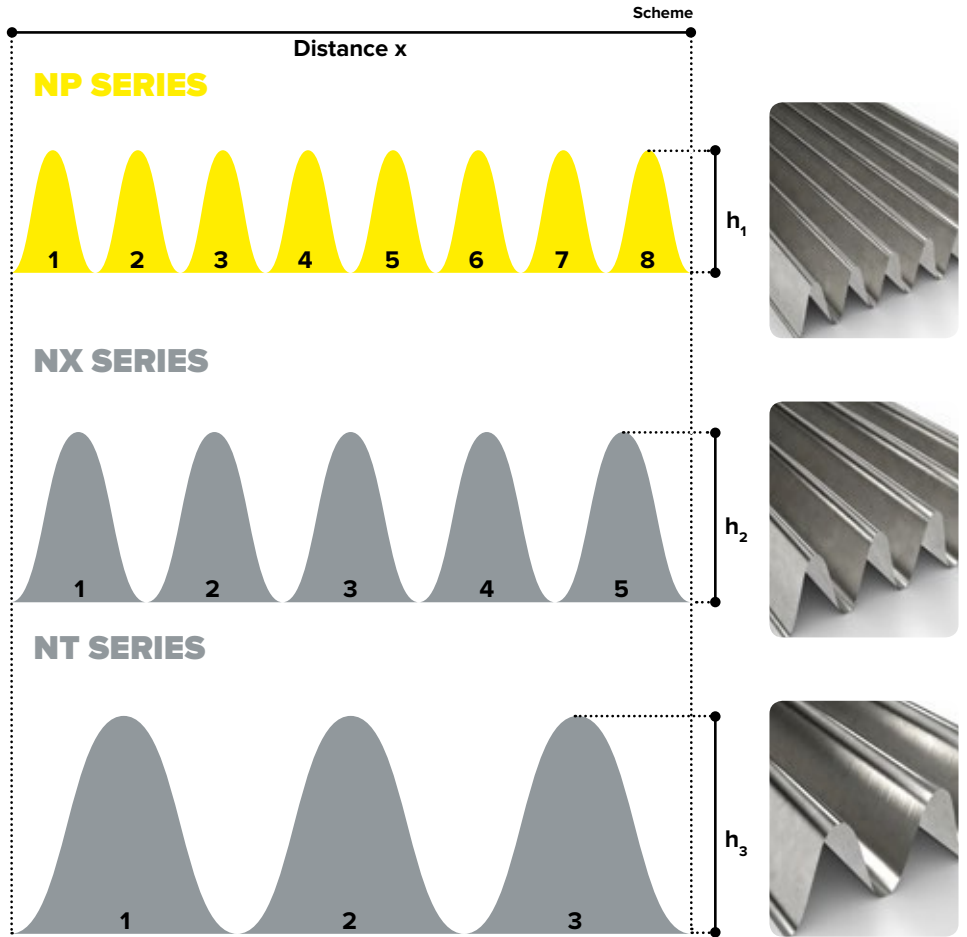
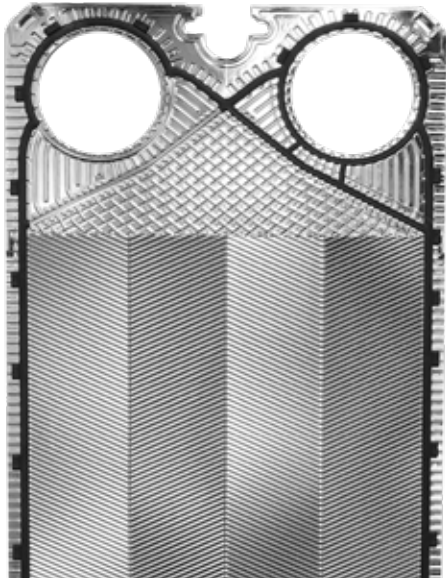
With the NP Series we meet highest pressure standards. It withstands an extremely high test pressure of up to 42 bar(g).

ADVANTAGES

- ▶ **EASY ASSEMBLY AND CLEANING**
- ▶ **POSLOC ASSEMBLY – FOR A PERFECTLY ALIGNED PLATE PACK. WAVING IS LITERALLY IMPOSSIBLE.**
- ▶ **ECOLOC GASKET SYSTEM – FOR EASY & RELIABLE FIXATION AND REMOVAL**
- ▶ **OPTIWAVE DESIGN – FOR HIGHEST EFFICIENCY AND LOWEST FOULING**
- ▶ **ONE FRAME FOR ALL – USING THE SAME FRAME FOR ALL OUR N SERIES PLATES OFFERS A MAXIMUM OF FLEXIBILITY.**

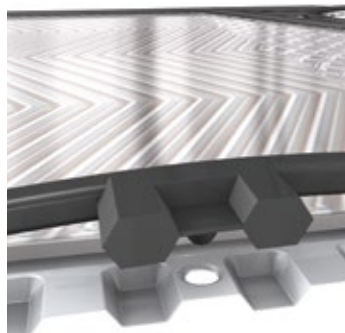
PRINCIPLE

- ▶ Compared to plates with standard herringbone pattern the NP plate offers a shorter wavelength and smaller pressing depth.
- ▶ Thus the NP plate gap is extremely narrow with highly turbulent flow.



OPTIWAIVE DESIGN

Kelvion's exclusive plate corrugation pattern allows even flow distribution across the entire plate surface thereby maximizing heat transfer while minimizing fouling rates, plate count, and cost..



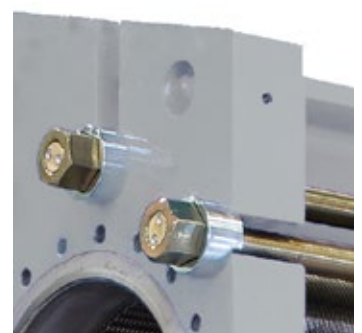
ECOLOC GASKET SYSTEM

Kelvion gaskets work in perfect combination with our plates to ensure worry free operation. Our chamfered opening allows each gasket to settle into position and also prevents the lock tab from being severed. Gaskets can be easily installed without tools or adhesive and self-seat during closing. It takes just seconds to replace a gasket making maintenance quick and easy.



POSLOC ASSEMBLY

Kelvion's trademarked PosLoc plate design allows the GPHE plates to self-align and tightly seal every time the unit is closed. This feature virtually eliminates plate pack snaking, even if the frame is out of alignment and after repeated servicing. This distinctive feature provides you with years of stress free maintenance and operation.



ONE FRAME FOR ALL

Even if the medium or requirement changes, there is no greater flexibility. All of the N series plates can be used in the same frame with varying numbers of plates.

Type	Unit Width		Unit Height		Connection		Maximum Flowrate		Maximum Design Pressure	
	mm	inch	mm	inch			m ³ /h	USGPM	barg	psig
NP150X	640	25.20	2377	93.58	DN 150	6"	350	1541	32.3	468
NP250L	895	35.24	2866	112.84	DN 250	10"	350	4620	32.3	468