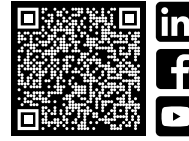




High operating pressures
of up to 90 bar

Patented profiles on fins
enhance heat transfer

CO2 and Propane
ready



www.kelvion.com

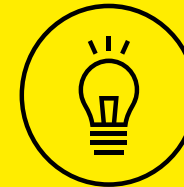
Kelvion Coils

INNOVATION AND EXPERIENCE FROM FIN TO TUBE



ADVANTAGES

- ▶ ADVANCED AND RELIABLE THERMAL SELECTION CAPABILITIES
- ▶ UNIQUE AND PATENTED HIGH-PERFORMANCE FIN DESIGN
- ▶ EXCELLENT CUSTOMER SERVICE AND SUPPORT
- ▶ FAST DELIVERY EVEN FOR 100% CUSTOM DESIGNED UNITS
- ▶ LONG LIFE CYCLE / DURABILITY



KELVION SELECT



Your tool for thermodynamic
Heat Exchanger Selection
ANYTIME. ANYWHERE.

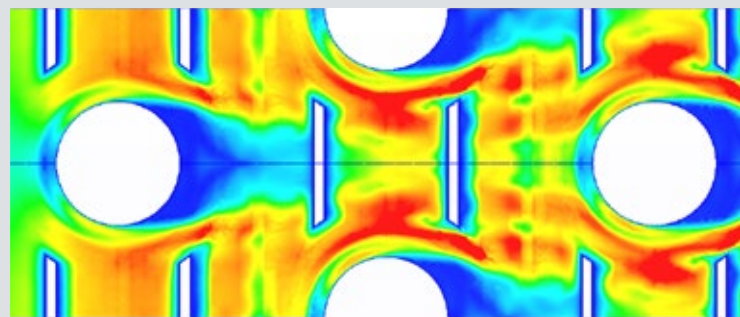
<https://selectrt.kelvion.com>



COIL TYPES

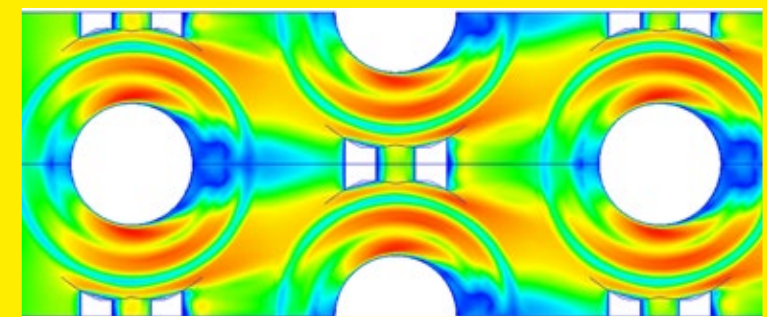
- ▶ Air heater
- ▶ Air cooler
- ▶ Run around coil
- ▶ Condenser
- ▶ DX Evaporator
- ▶ Multi-sectional coil
- ▶ Reversible coil
- ▶ Heat pipe
- ▶ Round / square coil

REGULAR FIN DESIGN



FLOW FIELDS BETWEEN FINS (CFD)

HIGH EFFICIENT KELVION FIN DESIGN



FLOW FIELDS BETWEEN FINS (CFD)

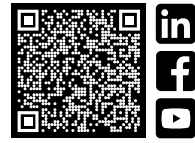




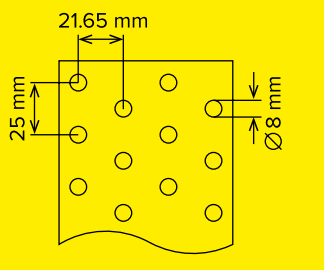
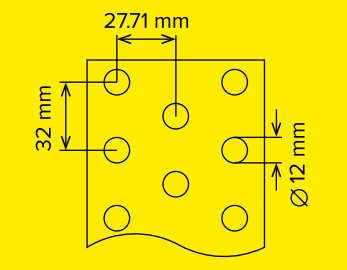
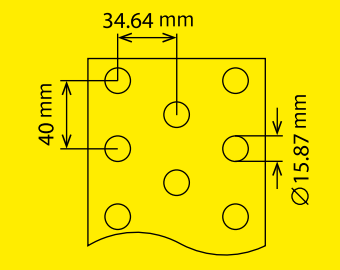
Thermodynamic design is created with our in-house developed selection software

Ideally suited for HVAC and Refrigeration applications

Designed for your specific application



TECHNICAL SPECIFICATIONS (further specifications on request)

FIN TUBE PATTERN			
Tube arrangement	staggered	staggered	staggered
Tube pitch	25 mm	32 mm	40 mm
Row pitch	21.65 mm	27.71 mm	34.64 mm
Tube diameter	7.94mm (copper)	12 mm (copper)	15.87 mm (copper & StSt)
Tube wall thickness	0.28 mm – 0.6 mm	0.32 mm – 0.5 mm	0.4 mm (copper); 0.7 mm (StSt)
Tube inner profile	smooth, grooved	smooth, grooved	smooth
Fin thickness	0.12 – 0.18 mm	0.12 – 0.18 mm	0.18 – 0.335 mm
Fin pitch	1.6 – 4.0 mm	1.8 – 4.0 (7) mm	1.8 – 4.0 mm
Fin profile	uniquely waved	flat, corrugated, turbulators, uniquely waved	flat, turbulators
Fin materials	aluminum, aluminum epoxy, copper	aluminum, AlMg2.5, aluminum epoxy, copper	aluminum
Max. tube length	200 – 4000 mm	200 – 14,000 mm	200 – 12,000 mm
Max. coil height	150– 2176 mm	128 – 2176 mm	128 – 2176 mm

APPLICATION LIMITS

- ▶ **Max. operation temperature:** 150 °C
- ▶ **Max. operation pressure:** 90 bar

CERTIFICATES

- ▶ ISO 9001
- ▶ PED (2014/68/UE)
- ▶ PZH (hygienic certificate HK/B/0288/02/2015)
- ▶ EAЭC N RU Д-PL.Б/108.В.03286

ADDITIONAL OPTIONS

- ▶ **Connection types:**
steel-threaded nozzle, steel flange, brass fittings, smooth tube for brazing on site
- ▶ **Casing designs:**
no casing, only side plates, complete casing, air-tight casing
- ▶ **Casing materials:**
galvanized steel, stainless steel, aluminum, copper
- ▶ **Coatings:**
Blygold™, Heresite™ (Säkapphen), G13-7051 (Friessen)
Hi-temp-Blygold