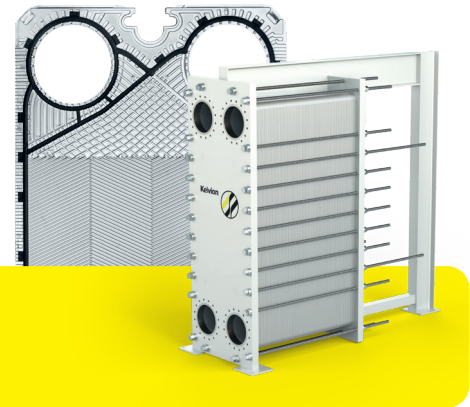




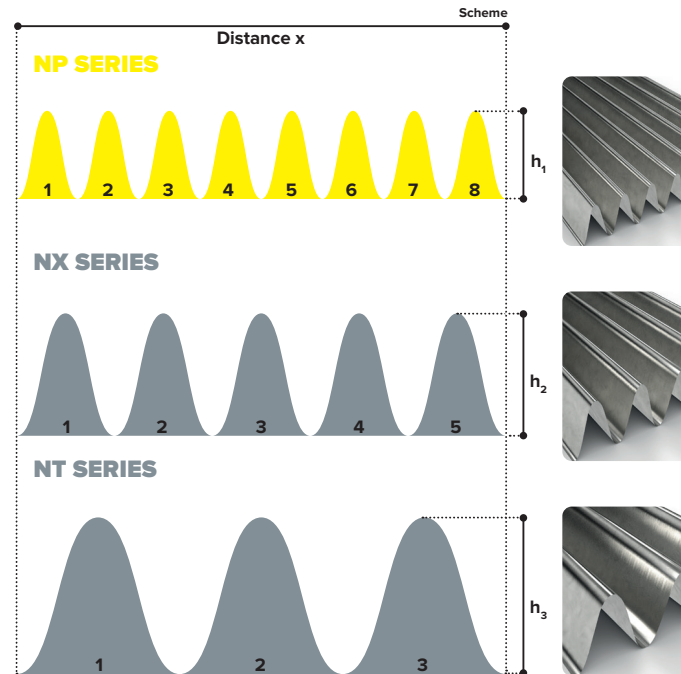
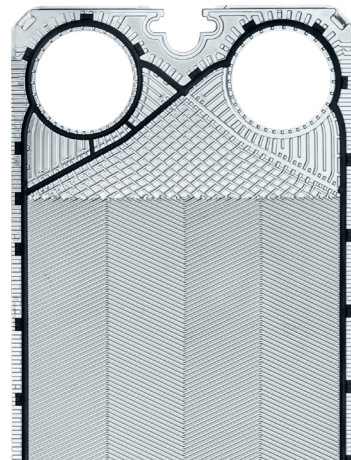
# Gasketed Plate Heat Exchanger

## NP PLATE TECHNOLOGY



### PRINCIPLE

- ▶ Compared to plates with standard herringbone pattern the NP plate offers a shorter wavelength and smaller pressing depth.
- ▶ Thus the NP plate gap is extremely narrow with highly turbulent flow.



### YOUR BENEFITS

- ▶ Perfect fit for extremely low temperature differences between the two media
- ▶ For high NTU values
- ▶ With test pressures up to 42 bar(g) for most demanding applications

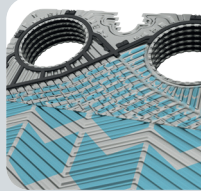
### INDUSTRIES



Type	Unit Width		Unit Height		Connection	Maximum Flowrate		Maximum Design Pressure		
	mm	inch	mm	inch		m <sup>3</sup> /h	USGPM	bar(g)	psig	
NP100X	540	21.26	1952	76.85	DN 100	4"	150	660	32.3	468
NP150X	640	25.20	2377	93.58	DN 150	6"	350	1541	32.3	468
NP250L	895	35.24	2866	112.84	DN 250	10"	1050	4620	32.3	468

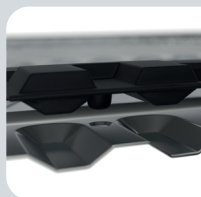
### OPTIWAVE PLATE PATTERN

- ▶ Exclusive plate corrugation
- ▶ Flow to be distributed evenly across the entire plate surface
- ▶ Maximizing heat transfer, minimizing fouling rates



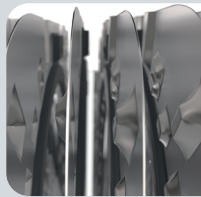
### ECOLOG GASKETS

- ▶ Worry free operation
- ▶ Chamfered opening allows each gasket to settle into position
- ▶ Prevents the lock tab from being severed



### POSLOC ASSEMBLY

- ▶ Allows plates to self-align and tightly seal
- ▶ Eliminates plate pack snaking
- ▶ Years of stress-free maintenance and operation



### ONE FRAME FOR ALL

- ▶ All of the N-Series plates can be used in the same frame with varying numbers of plates.

