

100% separate flow channels, making applications with aggressive media feasible

High pressure resistance on welded side

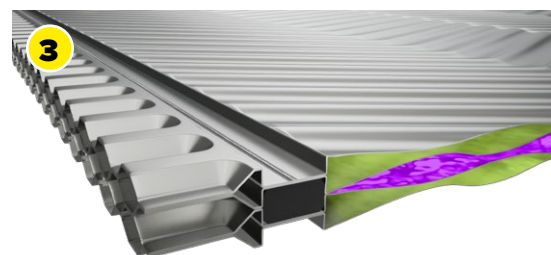
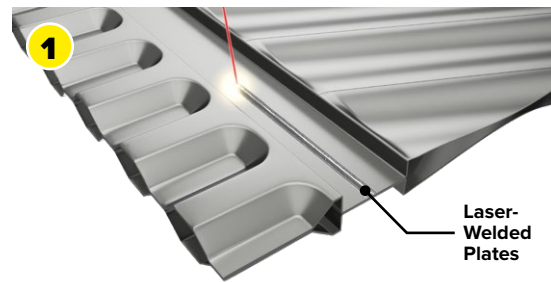
High reliability for critical media

Gasketed Plate Heat Exchanger

LWC LASER WELDED TECHNOLOGY

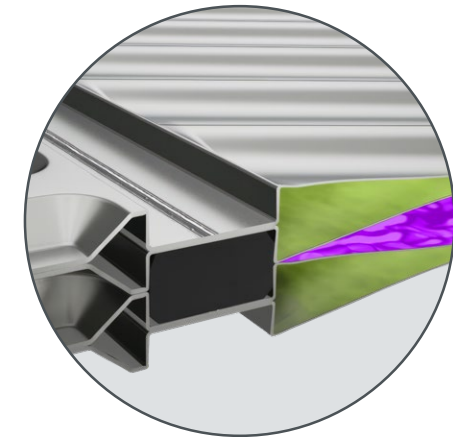
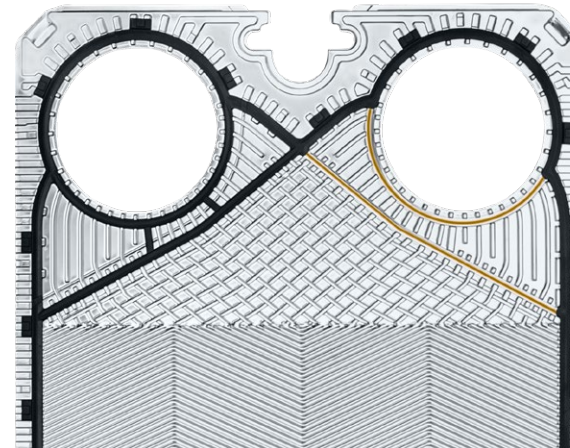


PRINCIPLE – LASER-WELDED CASSETTE



- ▶ Our Laser Welded Cassette series combines the advantages of welded and gasketed plate heat exchangers
- ▶ Easily accessible gasketed flow channels for one medium

- Easily accessible gasketed flow channels for noncritical medium.
- Hermetically sealed welded flow channels for critical medium



YOUR BENEFITS

- ▶ 100% separate flow channels, making applications with aggressive media feasible
- ▶ Laser-welded flow channels for high process reliability
- ▶ High pressure resistance on welded side
- ▶ Cleaning access from gasketed side

INDUSTRIES



| Type | Unit Width | | Unit Height | | Connection | | Maximum Flowrate | | Maximum Design Pressure | |
|---------|------------|-------|-------------|--------|------------|----|-------------------|-------|-------------------------|------|
| | mm | inch | mm | inch | | | m ³ /h | USGPM | barg | psig |
| LWC100T | 540 | 21.26 | 1,110 | 43.71 | 100 | 4 | 160 | 700 | 31.5 | 457 |
| LWC100M | 540 | 21.26 | 1,516 | 59.69 | 100 | 4 | 160 | 700 | 31.5 | 457 |
| LWC100X | 540 | 21.26 | 1,952 | 76.86 | 100 | 4 | 160 | 700 | 31.5 | 457 |
| LWC150S | 640 | 25.20 | 1,717 | 67.6 | 150 | 6 | 380 | 1670 | 31.5 | 457 |
| LWC150L | 640 | 25.20 | 2,197 | 86.5 | 150 | 6 | 380 | 1670 | 31.5 | 457 |
| LWC250S | 895 | 35.24 | 2,272 | 89.45 | 250 | 10 | 1050 | 4620 | 29.2 | 424 |
| LWC250L | 895 | 35.24 | 2,866 | 112.84 | 250 | 10 | 1050 | 4620 | 29.2 | 424 |
| LWC350S | 1,135 | 44.69 | 2,776 | 109.3 | 350 | 14 | 2070 | 9110 | 30.0 | 435 |

* welded side