

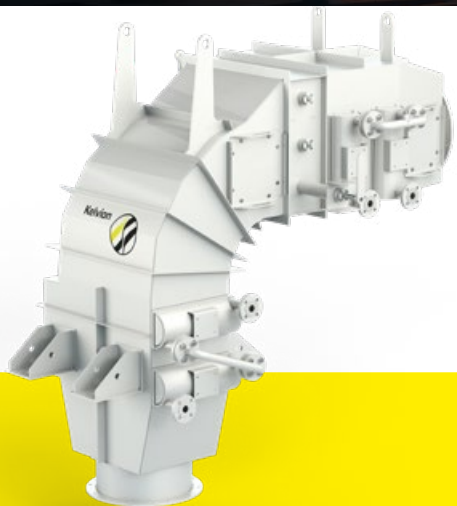
Heating Solutions

AIR DRYER & ECONOMISER

High heat transfer coefficient

Customised to process

High durability & low pressure drop



TUBES



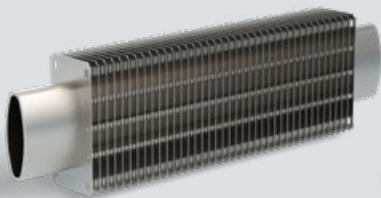
EXTRUDED TUBES

- ▶ Good heat transfer
- ▶ Low cost solution
- ▶ CS or SS core, aluminium fins



LASER FINNED TUBES

- ▶ High durability
- ▶ Resistant to corrosion & high temperature
- ▶ CS or SS, core and fins



ELLIPTICAL TUBES

- ▶ High durability
- ▶ Low pressure drop
- ▶ Fully hot dip galvanized
- ▶ CS or SS core, CS core



PLAIN TUBES

- ▶ Condensation friendly
- ▶ Corrosion resistant
- ▶ Excellent for cleaning
- ▶ CS or SS

DESIGN PARAMETER



DESIGN PRESSURE

-1 barg

200 barg
2900 psi



DESIGN TEMPERATURE

-196°C
-321°F

+550 °C
+1022°F

MARKETS



Chemicals



Power

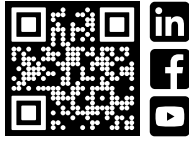


Heavy & Light Industry

EXPERTISE

- ▶ Economisers
Safe gas bypass solutions
- ▶ AirDryers
Tailored for your process
- ▶ Great variety of tubes and casings
- ▶ Solutions dedicated for clean chemical & food processes





High heat transfer coefficient

Customised to process

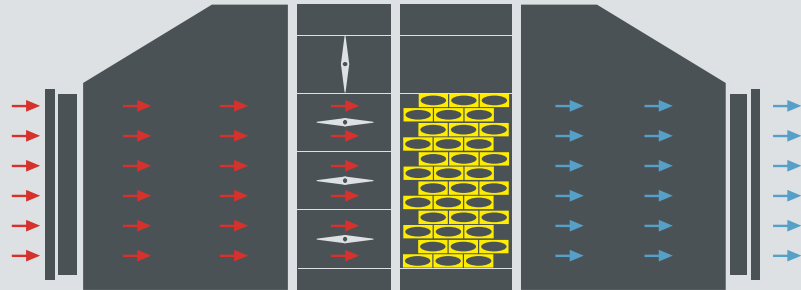
High durability & low pressure drop

Heating Solutions

AIR DRYER & ECONOMISER

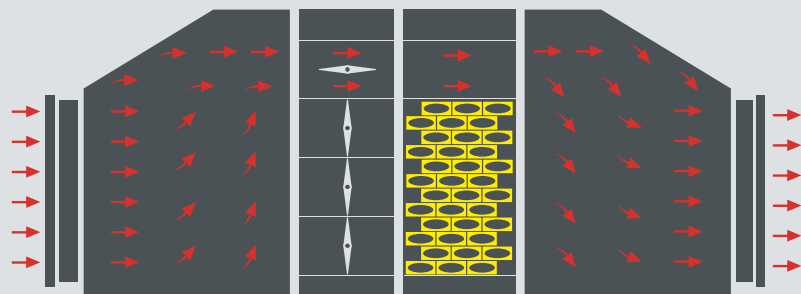
FULL RECOVERY

Absorption of the waste heat from hot gas by the medium contained in the tubes



FULL BYPASS

No heat exchange, exhaust gas remain hot



ONE UNIT
FOR MULTIPLE
CIRCULATIONS



POSSIBLE WORKING POSITIONS

